



Ozone Generator

Air | Water | Waste Water



General Specification :

Ozone Out put	: 02 G/hr - 1kg/hr ^{1&6}
Ozone Concentration	: 80 G/m ³ - 140 G/m ³ ²
MOC of Ozone Cell	: SS 316 L/Ceramic
MOC of Enclosure	: Carbon Steel
Enclosure Finish	: RAL 7035, Structure Power Coated
Dielectric	: Precision Ceramic
Corona Discharge	: 0.6 - 0.9 W/Cm ²
Power Efficiency	: 6.0 - 8.0 kw/kg of O ³
Cell Electrode Cooling	: Internal & External
Cell Cooling Medium	: Forced Air/Water
Power Supply	: Switch Mode Power Supply (SMPS) ³
Power Amplifier	: IV - Generation IGBT Technology
High Frequency Transformer	: Forced Air Cooled Ferrite Core
Indicators	: Power + Stand-by + Ozone ON
Variable Ozone Control	: 25 % - 100 %
Service Indicator	: Non Re-settable Hr Meter
Operating Temperature	: 15°C - 40°C
Line Voltage	: 230 V ac ; 50 Hz / 110 V ac ; 60 Hz
Installation Condition	: Floor/Wall
Specified Life	: 20,000 Working Hrs ⁴
Standard Usage	: 24 x 7 x 365 - Commercial & Industrial Use
Feed Gas	: Oxygen
Concentration	: > 90%
Due Point	: > - 45°C

Sensors :

- Cooling Water Flow
- Cooling Fan Operation
- Feed Gas Flow ³
- Cooling Water Temperature ³
- Power IGBT Temperature ³
- ORP Controller Connectivity

Protections & Safety :

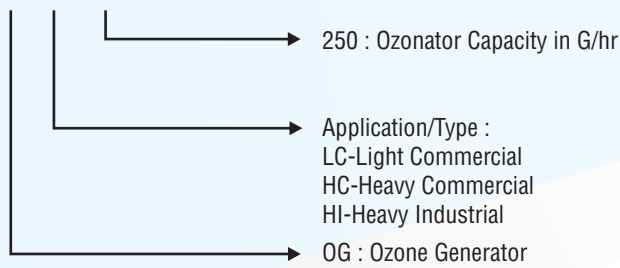
Power Board	:	Line voltage surge & spike
	:	Delayed Soft Start & Soft Off
	:	Over temperature protection
	:	Over Current
	:	Over Voltage
	:	Under Voltage
	:	High Voltage Short Circuit
	:	High Voltage Open Circuit
	:	Feed Gas Non return Valve
	:	Feed Gas Safety Interlock
	:	Ozone Non Return Valve
	:	Fail Proof Back Flow Prevention ⁵
	:	Heat Exchanger For Feed Gas ⁵
	:	Anti-corrosion lacquer coating
Enclosure	:	UL - Certified
	:	CE - Marked
	:	Electricals Electronics - IP 54
	:	Ozone Cell - IP 65

1. Tested & specified with pure oxygen of 100% concentration.
2. Tested strictly as prescribed by International Ozone Association (IOA) with Iodometric method
3. On select models
4. Under Slandered Operation condition with routine periodic maintenance
5. Recommended Accessory
6. Stacked up to 50 Kg/hr

- For high performance & long life, we strongly recommend, installing ozonator & peripheral equipments in indoor, dry, moisture & dust proof environment preferably air conditioned.
- Specifications are subject to change for product enhancement, without prior notice.

Definition of Model :

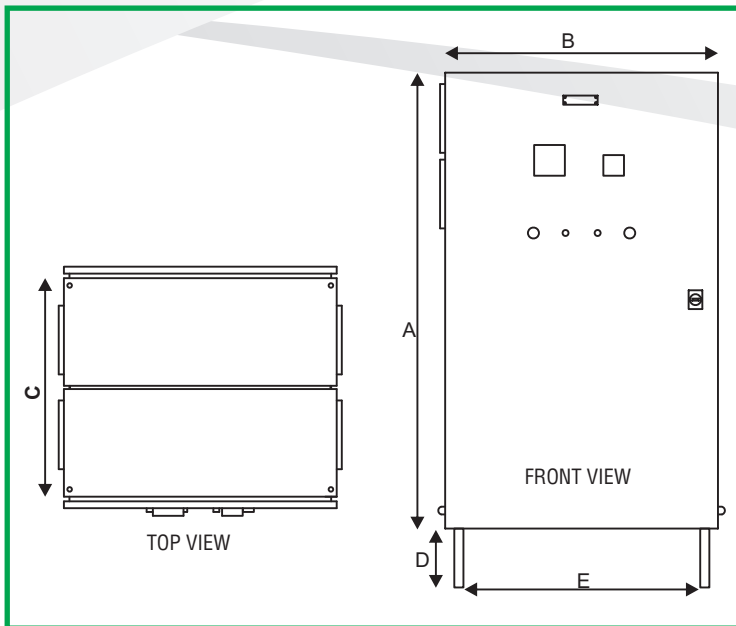
OG/HI - 250



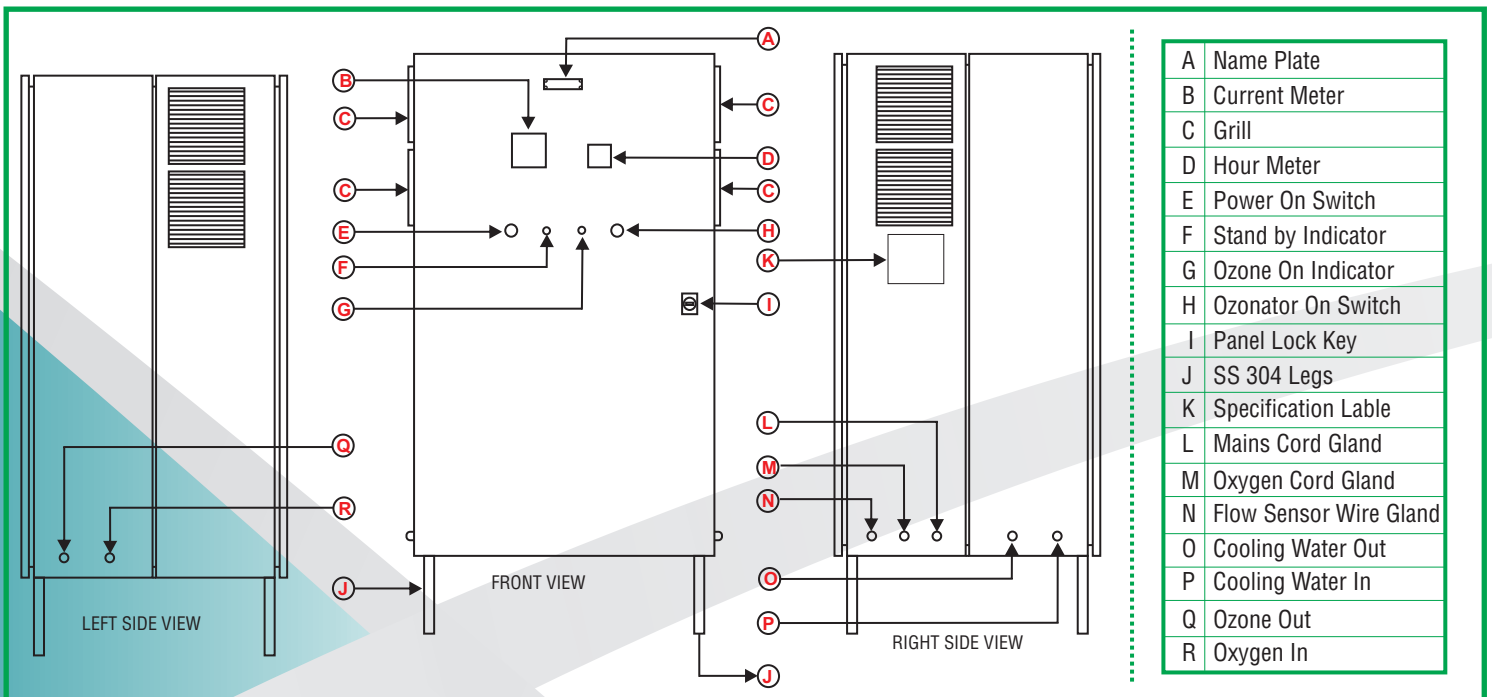
Dimensions Are In mm

Model No.	A	B	C	D	E	Net Weight (Kg)
OG/LC - 2	400	300	210	025	250	10
OG/LC - 5	500	400	210	025	350	12
OG/LC - 10	500	400	210	025	350	13
OG/LC - 20	600	400	210	025	350	16
OG/LC - 25	700	500	210	100	450	24
OG/LC - 30	800	400	210	100	350	30
OG/LC - 40	800	600	210	100	550	33
OG/LC - 50	800	600	260	100	550	35
OG/HC - 15	500	400	425	100	350	28
OG/HC - 35	500	400	425	100	350	30
OG/HC - 50	600	400	425	100	350	35
OG/HC - 75	800	400	425	100	350	55
OG/HC - 100	1000	600	525	100	550	90
OG/HI - 100	1000	600	525	100	550	90
OG/HI - 200	1000	600	525	100	550	95
OG/HI - 300	1000	800	525	100	750	125
OG/HI - 500	1000	800	525	100	750	130
OG/HI - 600	1000	1000	600	100	950	175
OG/HI - 800	1000	1600	525	100	1550	245
OG/HI - 1000	1000	2000	600	100	1950	325

Dimension :



Construction :



OG/LC - Series :

Features :

- Light commercial use with low/medium ozone concentration is suitable.
- Ozone output - 02 G/hr - 50 G/hr.
- Ozone Concentration - 40 - 70 G/m³.
- Mainly for air ozonation & applications where cell cooling water is not feasible.
- Internal & outer Ozone cell electrodes with radiator fins & forced air cooled.

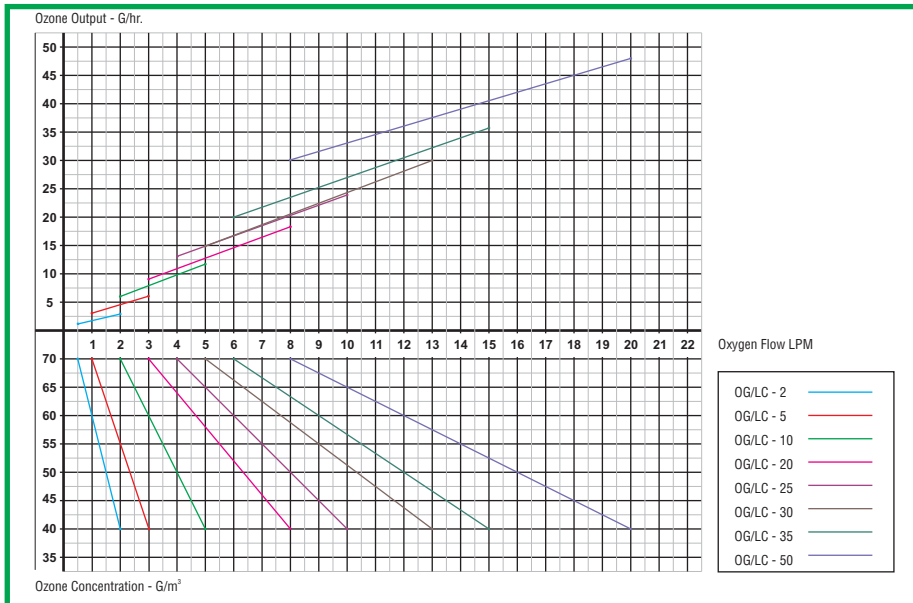
Applications :

- Air Disinfection
- Soak Disinfection
- Clean Room
- Odor destruction in Air
- Smoking Lounges
- Post Fire Odor destruction
- STP foul odor destruction
- Enhance Indoor Air Quality
- VOC reduction in Air
- Pulses & Grains Soak Disinfection
- Fruits & Veggies Soak disinfection
- Meat & Sea food Soak disinfection
- Processing & Packing
- Short & Long term Storage
- Cold & Deep Storage
- Commercial Laundry washer
- Denim & Fabric Bleaching

Industry :

- Research & Development [R & D]
- Air Handling Units [AHUs]
- Dairy
- Aquaculture
- Garment
- Hospitals | OT | ICU
- Housekeeping
- Hotels | Restaurants | Resorts
- Corporate Buildings
- Pharmaceuticals
- Malls & Theaters
- Food Processing
- Beverage
- Packing & Storage
- Clean Rooms
- Electronics

Performance Graph:



Model No.	Ozone Output (G/hr)	Oxygen Flow (LPM)	Concentration (G/m ³)	Power (W)
OG/LC - 2	1.5 - 3.0	0.5 - 2.0	70.0 - 40.0	40
OG/LC - 5	3.0 - 6.0	1.0 - 3.0	70.0 - 40.0	85
OG/LC - 10	6.0 - 12.0	2.0 - 5.0	70.0 - 40.0	150
OG/LC - 20	9.0 - 18.0	3.0 - 8.0	70.0 - 40.0	250
OG/LC - 25	13.0 - 24.0	4.0 - 10.0	70.0 - 40.0	300
OG/LC - 30	15.0 - 30.0	5.0 - 13.0	70.0 - 40.0	400
OG/LC - 40	25.0 - 42.0	7.0 - 18.0	70.0 - 40.0	575
OG/LC - 50	30.0 - 48.0	8.0 - 20.0	70.0 - 40.0	700

OG/HC - Series :

Features :

- Heavy commercial use with high ozone concentration applications
- Ozone output - 10 G/hr - 110 G/hr.
- Ozone concentration - 70 - 140 G/m³.
- Mainly for air & water ozonation & applications where high concentration of ozone is required.
- Internal & External ozone cell electrode both are water cooled for better cooling & high efficiency.
- Ozonator can be kept working for 24x7x365 with moderate rest.

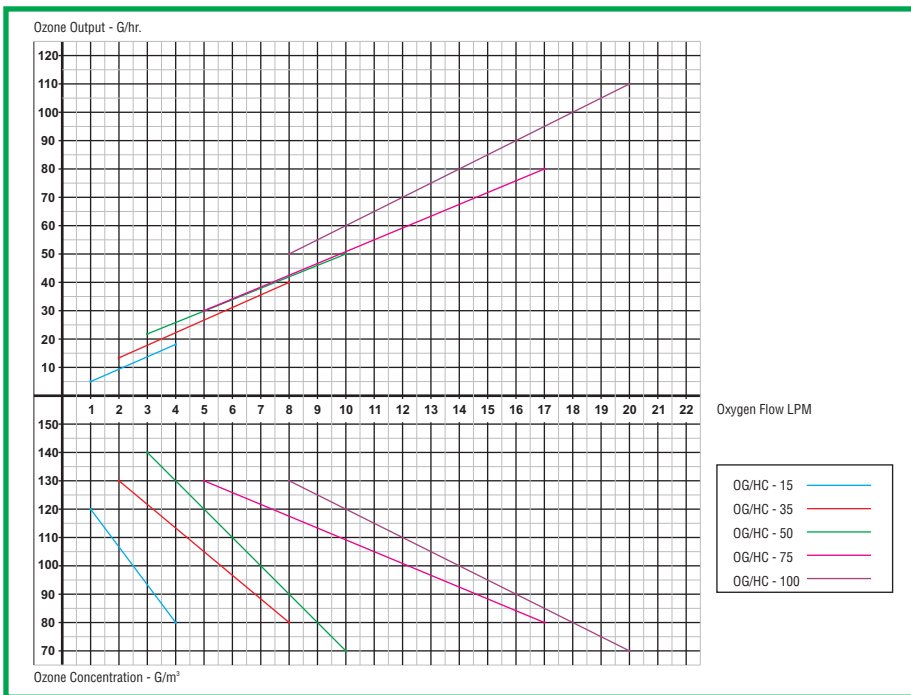
Applications :

- Air Disinfection
- Soak Disinfection
- Clean Room
- Odor destruction in Air
- Smoking Lounges
- Post Fire Odor destruction
- STP foul odor destruction
- Enhance Indoor Air Quality
- VOC reduction in Air
- Drinking & Process water Treatment
- Residential swimming Pools
- Pulses & Grains Soak Disinfection
- Fruits & Veggies Soak disinfection
- Meat & Sea food Soak disinfection
- Processing & Packing
- Short & Long term Storage
- Cold & Deep Storage
- Commercial Laundry washer
- Denim & Fabric Bleaching

Industry :

- Research & Development [R & D]
- Air Handling Units [AHUs]
- Dairy
- Aquaculture
- Garment
- Hospitals | OT | ICU
- Housekeeping
- Hotels | Restaurants | Resorts
- Corporate Buildings
- Pharmaceuticals
- Malls & Theaters
- Food Processing
- Beverage
- Packing & Storage
- Clean Rooms
- Electronics

Performance Graph:



Model No.	Ozone Output (G/hr)	Oxygen Flow (LPM)	Concentration (G/m ³)	Power (W)
OG/HC - 15	5.0 - 15.0	1.0 - 4.0	120.0 - 80.0	150
OG/HC - 35	13.0 - 35.0	2.0 - 10.0	140.0 - 100.0	300
OG/HC - 50	22.0 - 50.0	3.0 - 10.0	140.0 - 100.0	500
OG/HC - 75	30.0 - 75.0	5.0 - 15.0	130.0 - 80.0	700
OG/HC - 100	50.0 - 100.0	8.0 - 20.0	130.0 - 100.0	800

OG/HI - Series :

Features :

- Heavy Industrial use with high ozone concentration application
- Ozone output - 70 G/hr - 1,000 G/hr.
- Ozone Concentration - 70 - 140 G/m³.
- Mainly for water & Waste ozonation & applications where higher concentration of ozone is required.
- Internal & External Ozone cell electrode both are water cooled for better cooling & higher efficiency.
- Ozonator can be kept working for 24x7x365 with moderate rest.

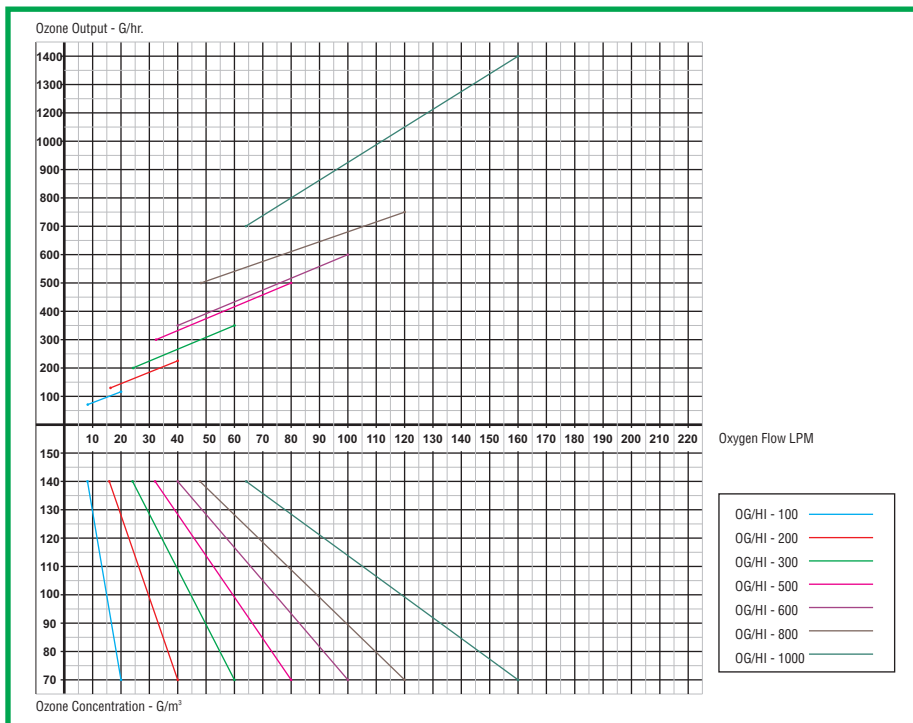
Applications :

- Soak Disinfection
- Odor destruction in Air
- STP foul odor destruction
- Drinking & Process water Treatment
- Public & Olympic size swimming Pools
- Commercial Laundry washer
- STP & ETP Tertiary Treatment
- COD & BOD Reduction
- Cooling Tower Water Treatment

Industry :

- Dairy
- Agriculture
- Aquaculture
- Textile & Garment
- Leather & Tanneries
- Cooling Towers
- Hotels | Resorts
- Pharmaceuticals
- Food Processing
- Fruit & Veggies
- Meat & Sea Food
- Beverage
- Domestic Waste Water
- Industrial Waste Water
- Laundry Waste Water
- Re cycling of liquid Waste
- Paper & Pulp
- Power Plants
- Steel Plant

Performance Graph:



Model No.	Ozone Output (G/hr)	Oxygen Flow (LPM)	Concentration (G/m ³)	Power (KW)
OG/HI - 100	70.0 - 100.0	8.0 - 20.0	130.0 - 80.0	0.8
OG/HI - 200	130.0 - 180.0	16.0 - 34.0	140.0 - 100.0	1.7
OG/HI - 300	200.0 - 250.0	34.0 - 50.0	140.0 - 100.0	2.5
OG/HI - 500	300.0 - 350.0	40.0 - 50.0	130.0 - 80.0	3.4
OG/HI - 600	400.0 - 630.0	50.0 - 85.0	130.0 - 100.0	4.3
OG/HI - 800	500.0 - 750.0	65.0 - 85.0	130.0 - 80.0	5.0
OG/HI - 1000	600.0 - 1400.0	65.0 - 165.0	130.0 - 100.0	7.0

Accessories :



Heavy Industrial Oxygen Concentrator



Ozone Contact Tank



Ozone Gas Diffuser



Light Com. Concentrator



Back Flow Preventer



Ventury



Side Stream Pump

Peripherals & Std Acc :

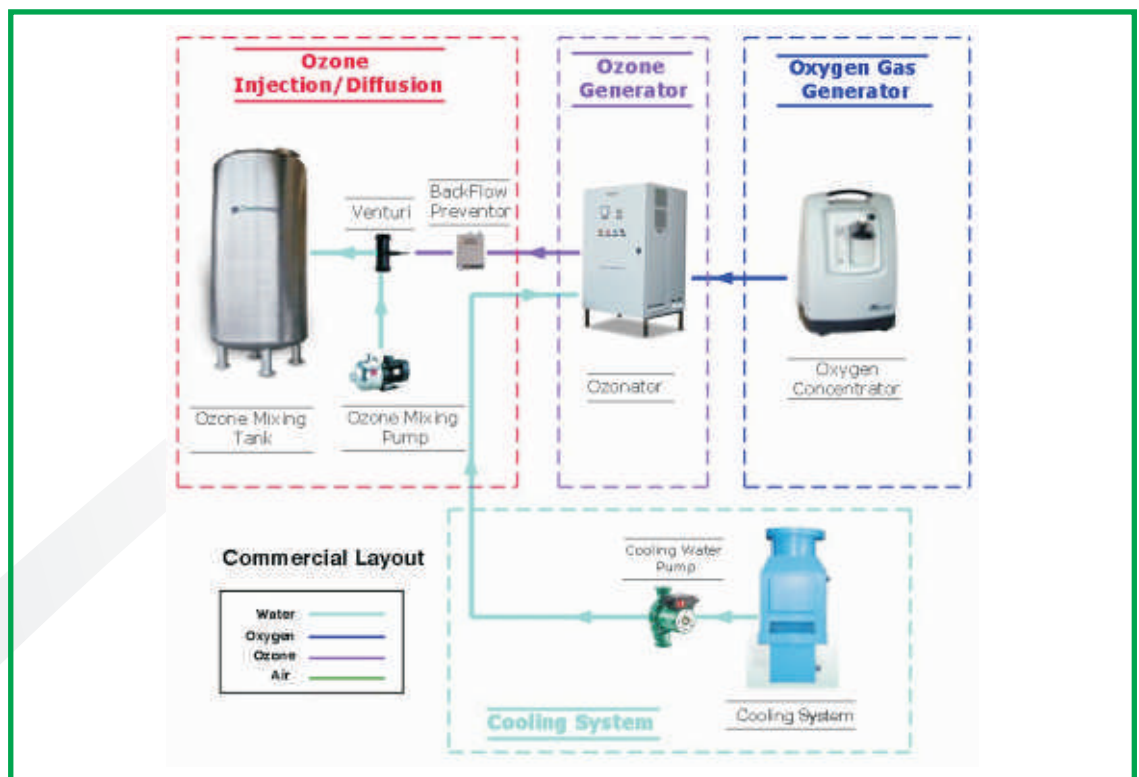
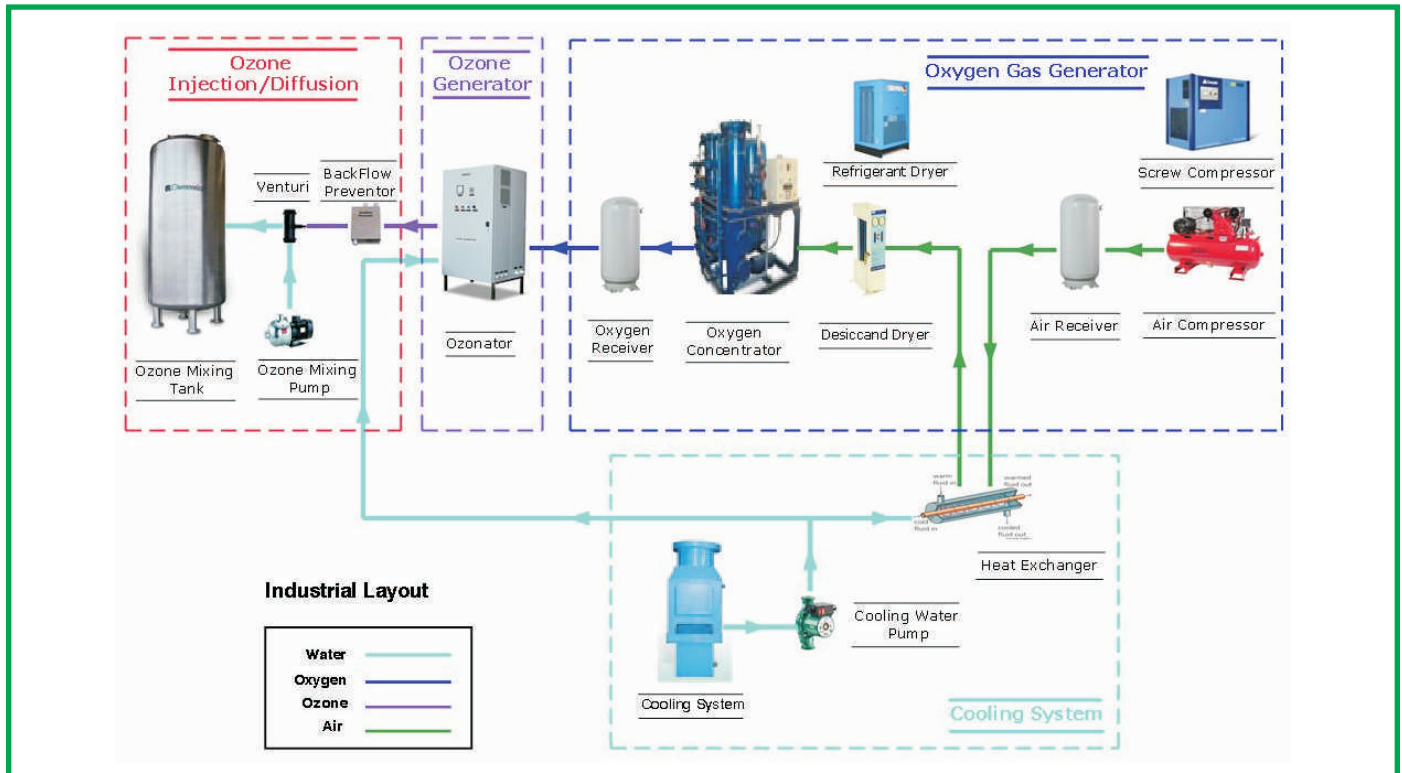
- Oxy Concentrator - Industrial
- Oxy Concentrator - Medical

- Back flow Preventor
- Oxygen Flow Sensor
- Oxygen Flow Distributor

- Cooling Water Flow Sensor
- Ventury
- NRVs
- Cooling Tower
- Static Mixture
- Ozone Contact Tank
- Side Stream Pump
- Cooling Tower water Circulating Pump

- Micron Filter
- Ozone Gas Vent
- ORP Monitor
- Off Gas UV Distructor
- Anti Oxidant Tubing
- Oxygen Feed Gas Tubing

Flow Diagram :



Chemtronics Technologies (India) Pvt. Ltd.

response@chemtronicsindia.com
 www.chemtronicsindia.com